

Indicações de Tratamento das Hepatites

Hugo Manuel Paz Morales

Médico Infectologista

Hospital Santa Cruz

Hospital Universitário Cajuru

Ambulatório de Hepatites/ CTA de Paranaguá



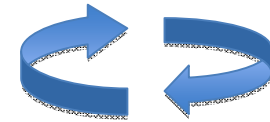
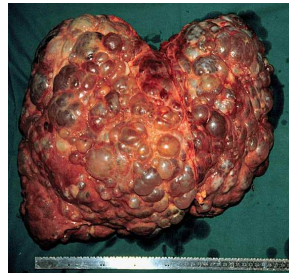
Dona Fátima



Hemobanco

Nossa qualidade está no sangue





Anti-HCV REAGENTE



Primeiros

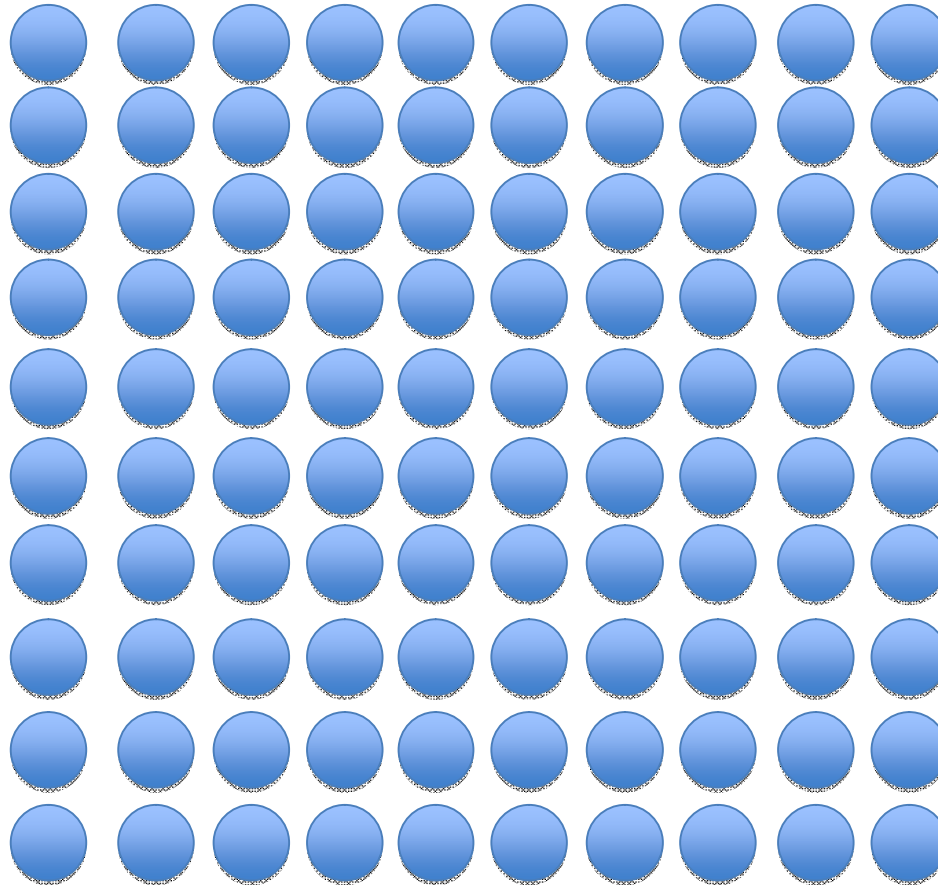


•Sexo anal



Primeiros Passos

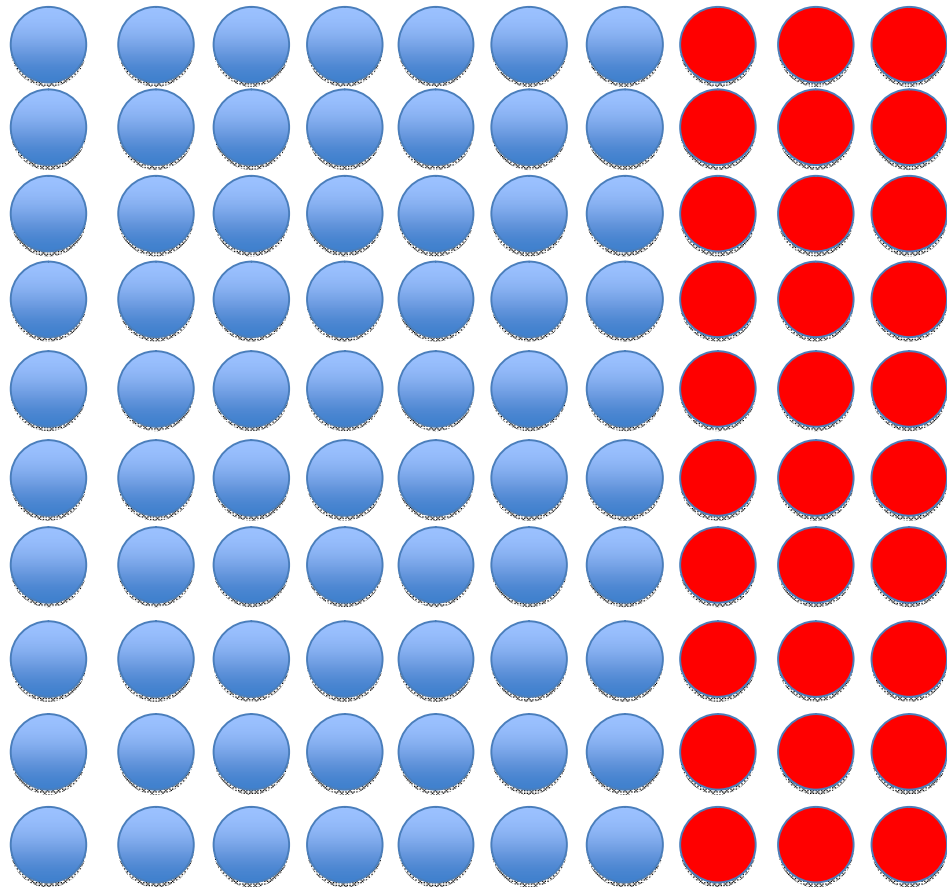
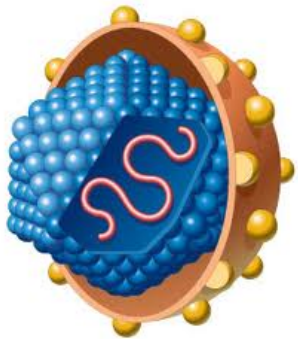
Confirmar



Micallef et al. *J Viral Hepat.* 2006 Jan;13(1):34-41. Spontaneous viral clearance following acute hepatitis C infection: a systematic review of longitudinal studies.
Rosen H, *Chronic Hepatitis C Infection. N Engl J Med.* 2011

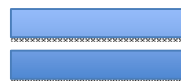
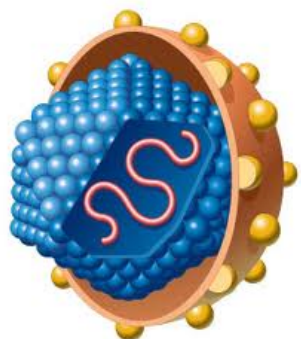
Primeiros Passos

Confirmar

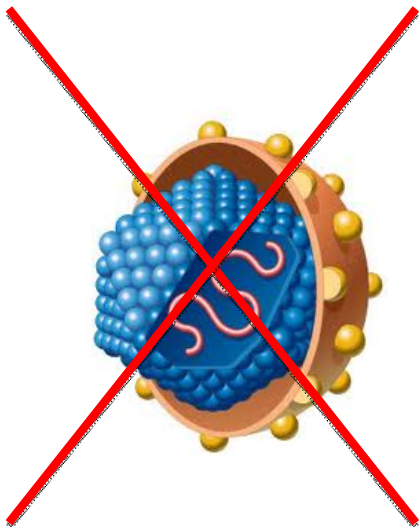


Clearance

Micallef et al. J Viral Hepat. 2006 Jan;13(1):34-41. Spontaneous viral clearance following acute hepatitis C infection: a systematic review of longitudinal studies.



Qual é o objetivo do tratamento?

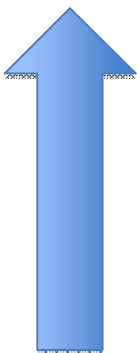


- Prevenir cirrose, hepatocarcinoma (HCC), descompensação de cirrose e morte.
- O *endpoint* é PCR indetectável após 3-6 meses do tratamento

Então, por que não tratamos todos os pacientes?

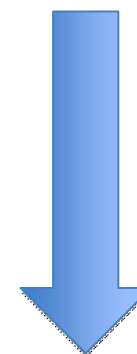
Benefícios:

Erradicação do VHC
Prevenção cirrose



Malefícios:

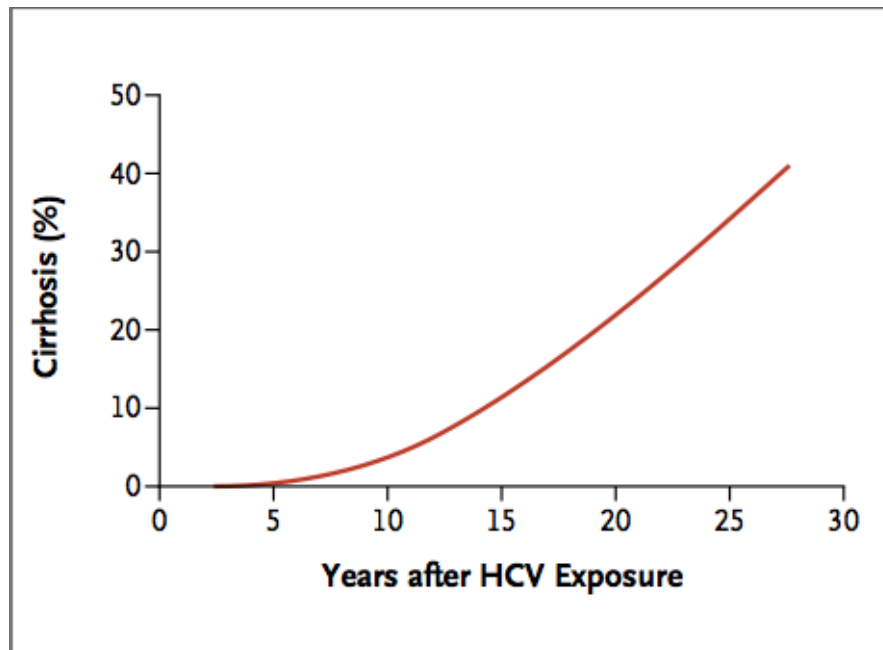
Efeitos colaterais
Custo



**Identificar quais pacientes possuem fibrose
avançada/cirrose**

Terapia Individualizada

Estimativa de progressão de fibrose de acordo com tempo de infecção



Fatores relacionados com Fibrose:

- Longo período de infecção
- Maior idade (>40a)
- Sexo Masculino
- Coinfecção (VHB/ HIV)
- Consumo diário de álcool
- Esteatose hepática
- Doença Auto-imune

Thein HH, Yi Q, Dore GJ, Krahn MD. Estimation of stage-specific fibrosis progression rates in chronic hepatitis C virus infection: a meta-analysis and meta-regression. Hepatology 2008;48:418-31

Rosen H, Chronic Hepatitis C Infection. N Engl J Med. 2011

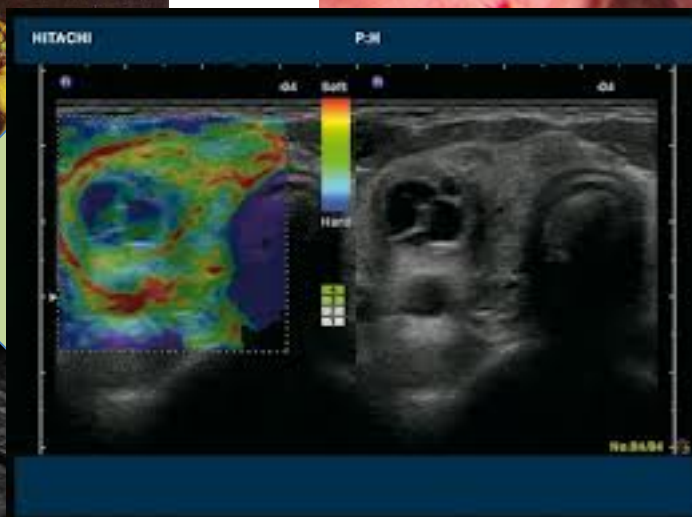
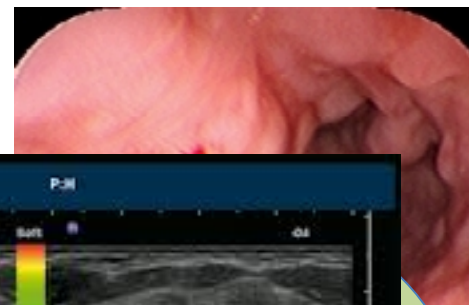
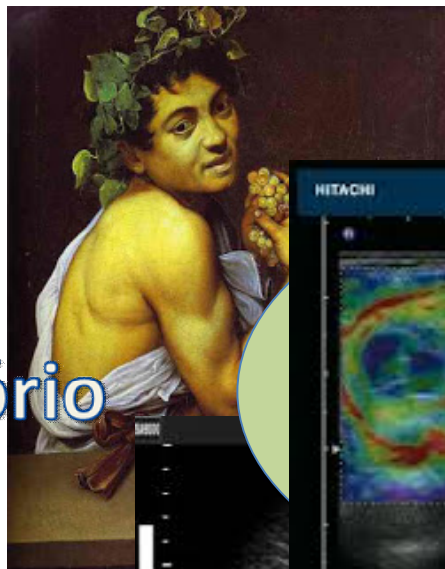
Como avaliar fibrose/cirrose

Clínica

Laboratório

Imagem

Métodos invasivos

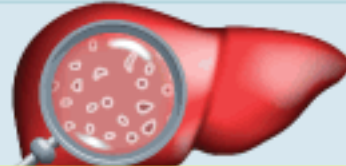


STAGES OF LIVER DAMAGE (Medical Illustration)



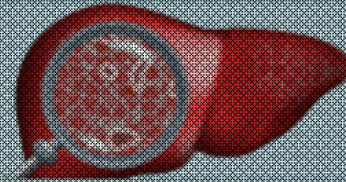
Stage 0 (F0)

No fibrosis (scarring) or liver damage.



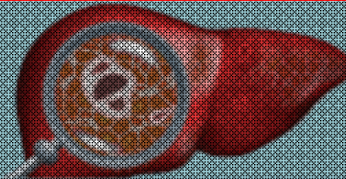
Stage 1 (F1)

Beginning of liver damage: damage has started with some slight scarring.



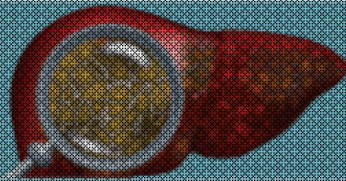
Stage 2 (F2)

Moderate liver damage: scarring advances in the liver and surrounding blood vessels.



Stage 3 (F3)

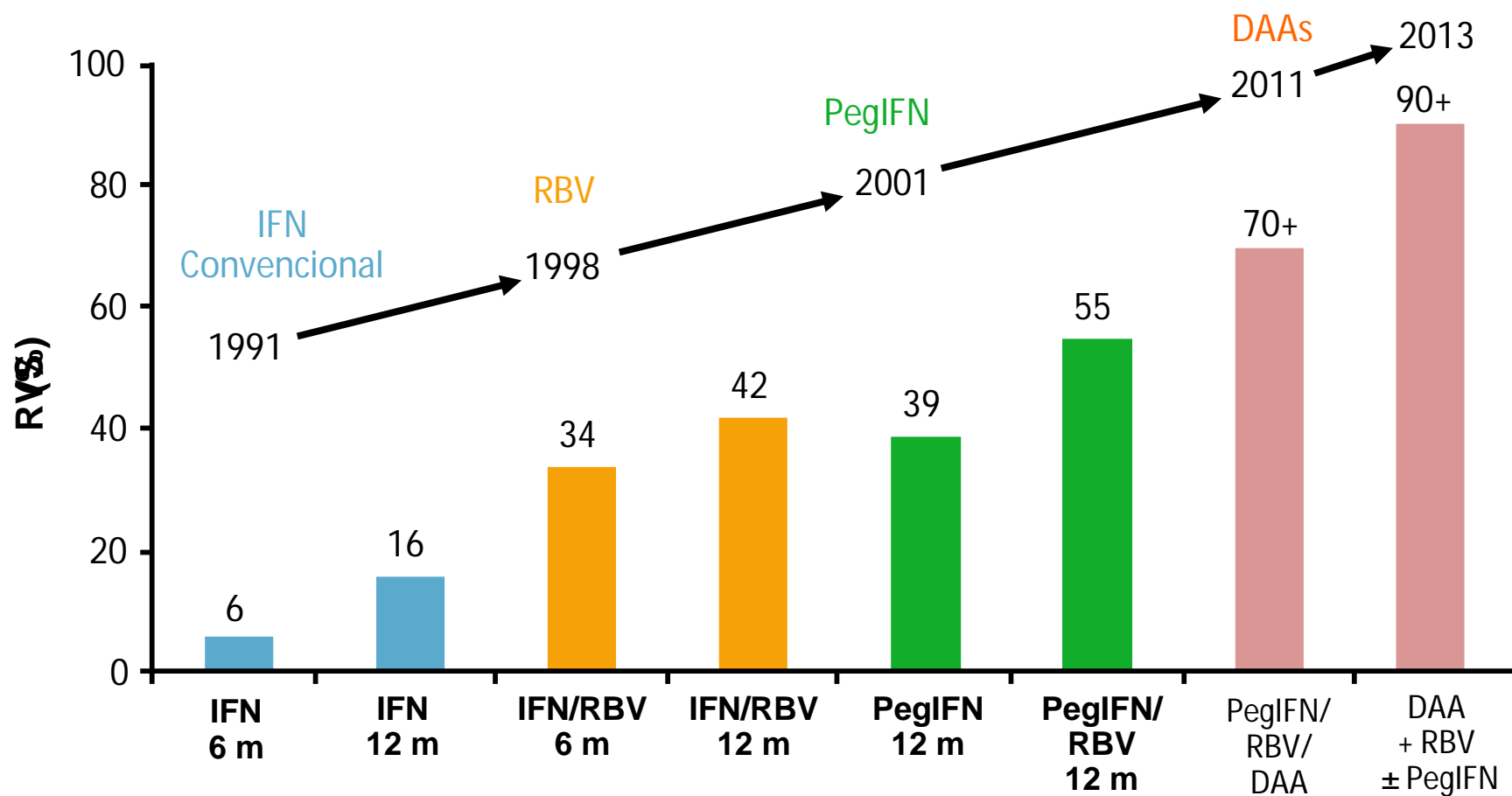
Significant liver damage: the liver becomes fibrotic (scarred) and connects with other scarred areas.



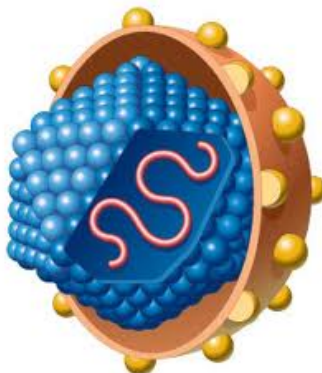
Stage 4 (F4)

Final stage of liver damage, also called cirrhosis: the liver is severely damaged and no longer functions properly.

Boas Notícias



US Food and Drug Administration, Antiviral Drugs Advisory Committee Meeting,
April 27-28, 2013, Silver Spring, MD.



Orientações
Fatores de Risco
Efeitos colaterais
Grau de Fibrose
Sinais de Cirrose
Manifestações Extra-hepáticas
Orientações Dietéticas
Prevenção de Injúrias

PCR quantitativo
Genotipagem

- USG Abdome superior
- Provas de Função Hepática (Bilirrubina, Albumina, Coagulograma)
- Enzimas Hepáticas (TGO, TGP)
- GGT, FA
- Função Renal (Ureia, Creatinina)
- TSH, T4 livre
- Lipidograma
- Anti-HIV, AgHbs, Anti-Hbc
- Anti-VHA

Valmir



VHB

AgHbs REAGENTE

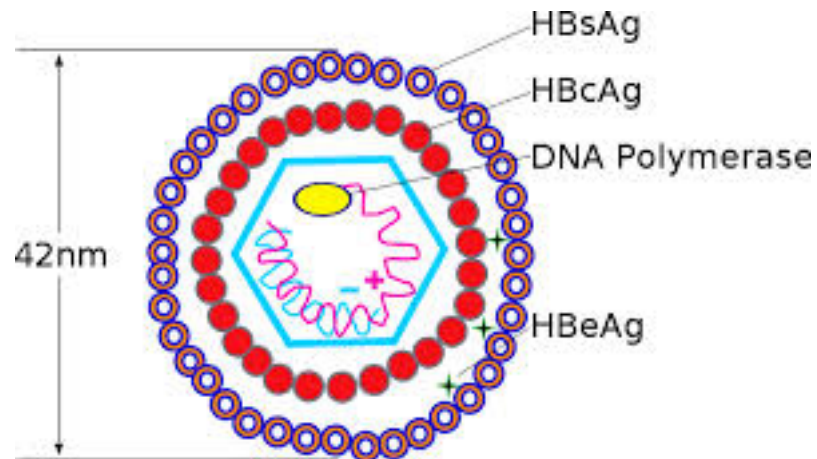
Anti-Hbc Total REAGENTE

Anti-Hbe REAGENTE

AgHbe NÃO REAGENTE

Anti-Hbs NÃO REAGENTE

Anti-Hbc IgG NÃO REAGENTE



AgHbe

PCR- HBV

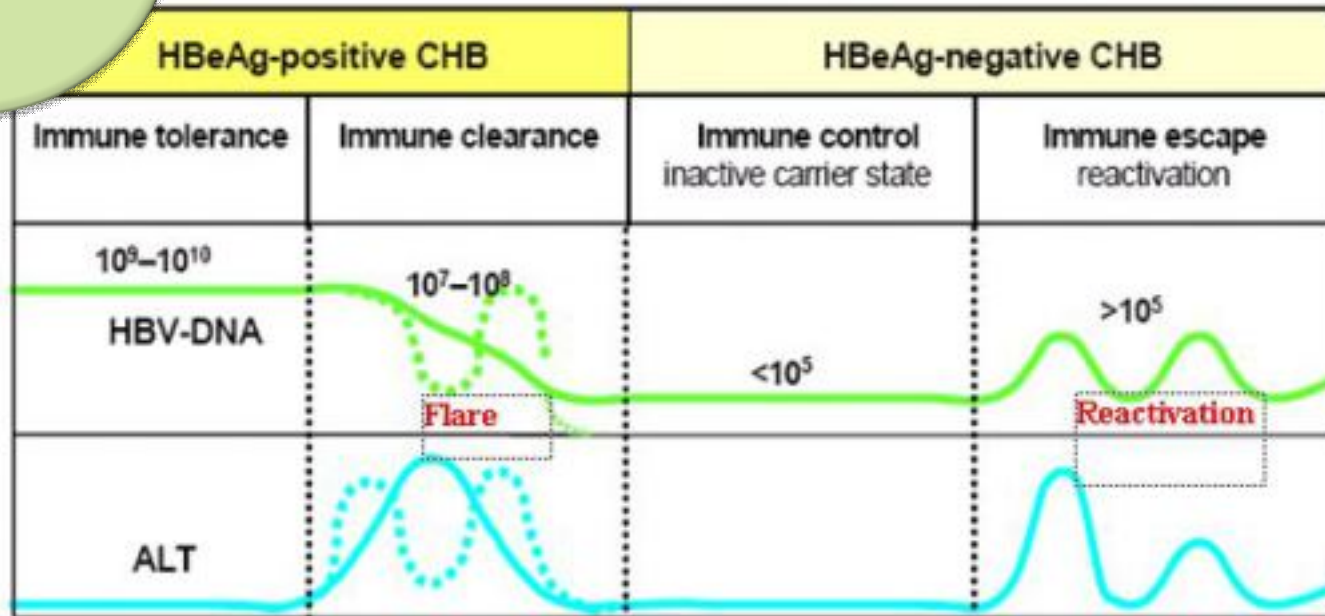
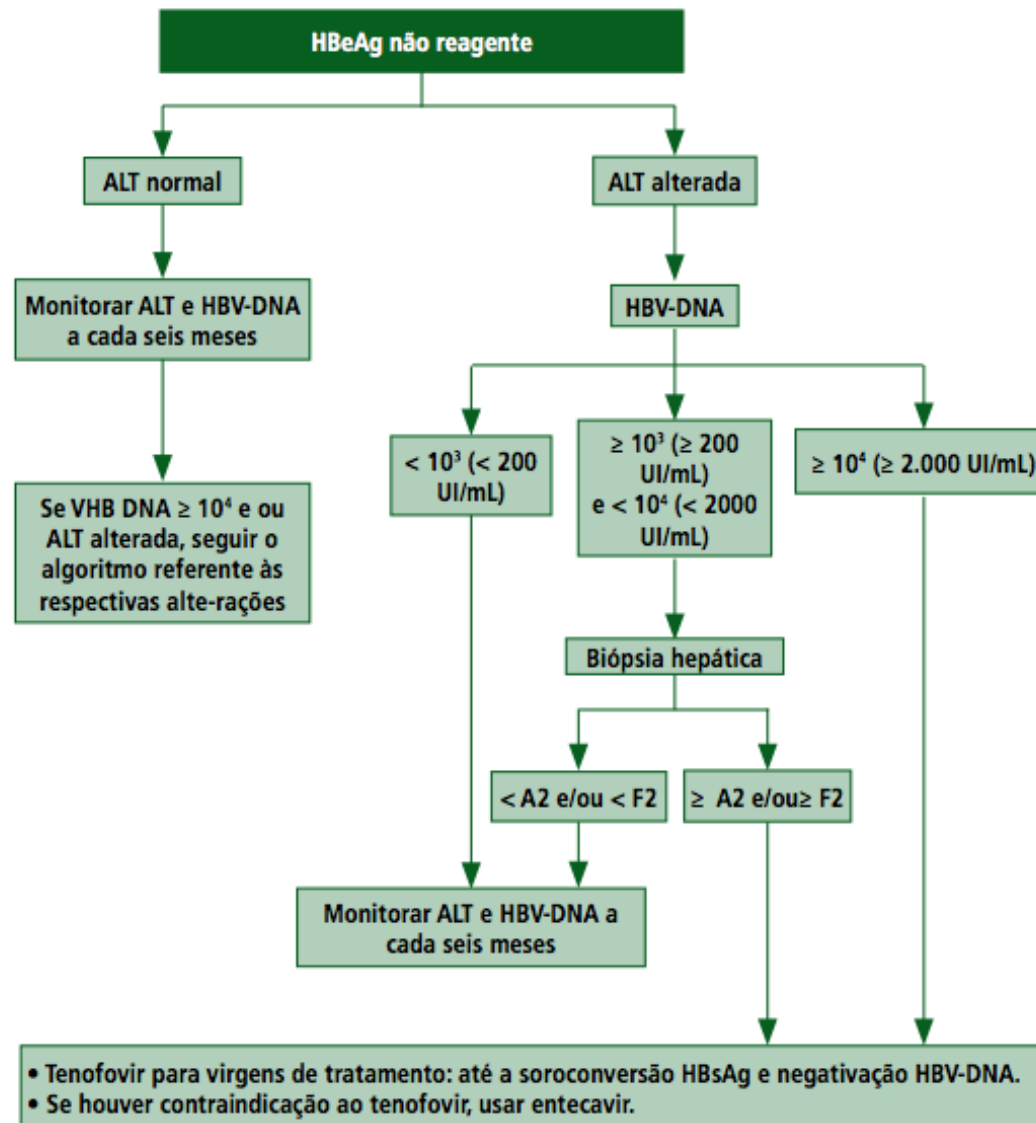
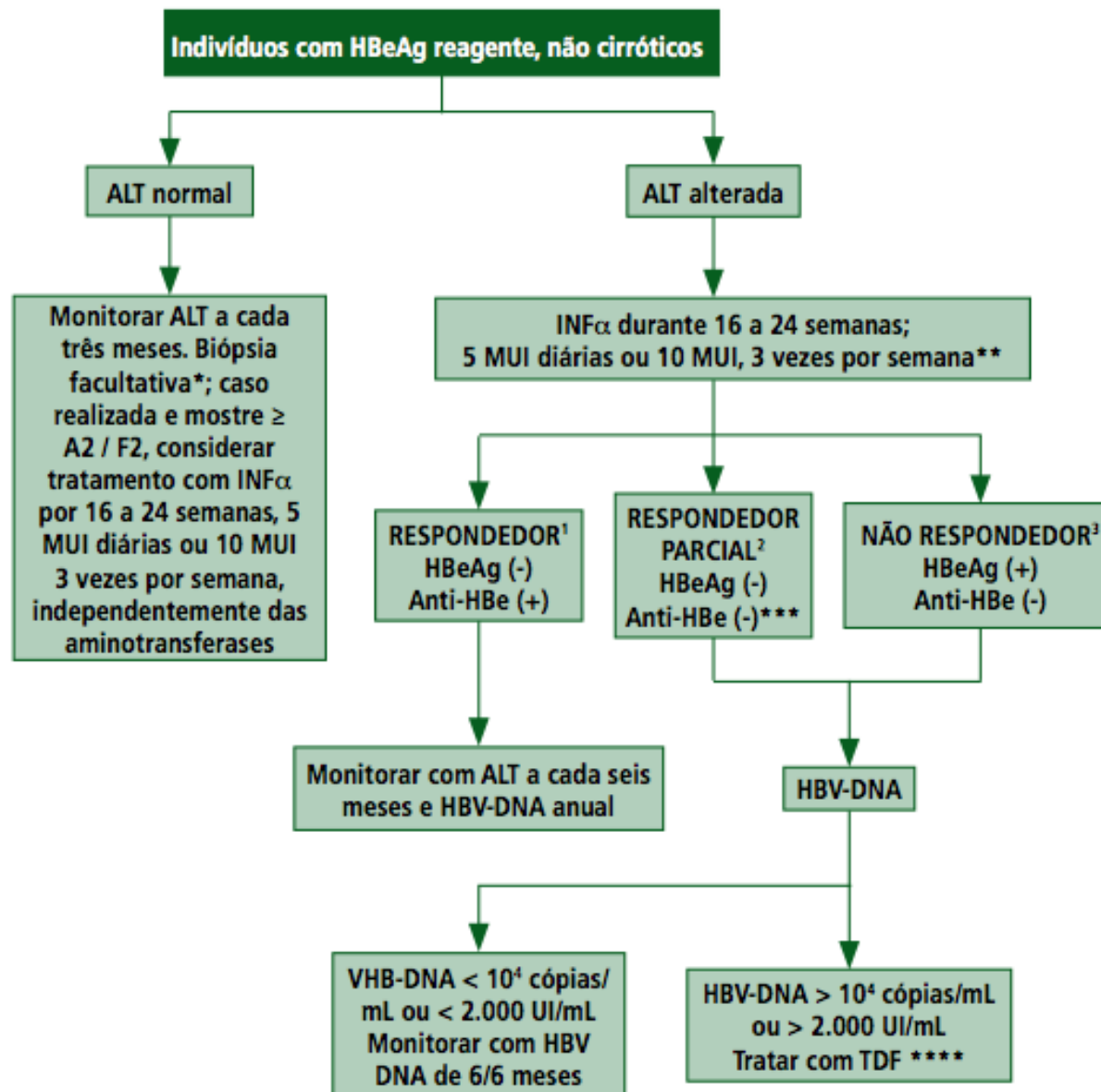


Fig 1
Natural history of chronic Hepatitis B infection
(Schalm 2006 with modification.)

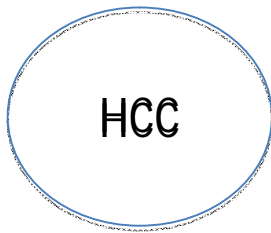






E o seu Valmir?

- USG Abdome superior
- Provas de Função Hepática (Bilirrubina, Albumina, Coagulograma)
- Enzimas Hepáticas (TGO, TGP)
- GGT, FA
- Função Renal (Ureia, Creatinina)
- TSH, T4 livre
- Lipidograma
- Anti-HIV, Anti-HCV
- Anti-VHA



- PCR quantitativo

845 cópias/mL

Biópsia= F2

Tenofovir

Greycy

Primigesta – 20 semanas

Teste Rápido Reagente para
VHB



Hepatite B na Gestação

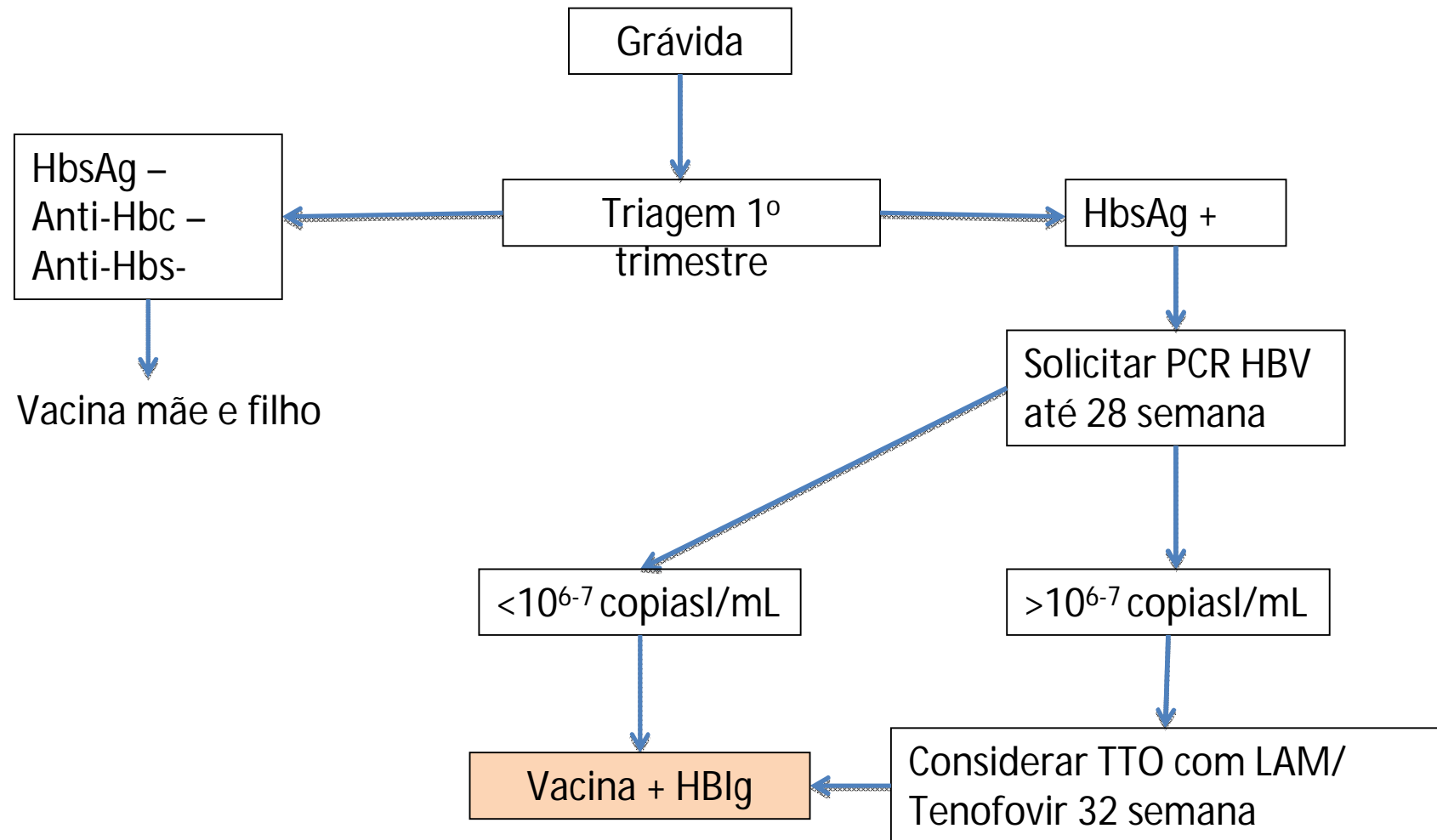


90% das infecções perinatais evoluem para hepatite B crônica

AgHbe + → 80% de chance transmissão transplacentária/ periparto

Sempre solicitar PCR- HBV (preferencialmente até a 28 semana)

Hepatite B na Gravidez



Obrigado
moraleshmp@gmail.com



AMERICAN ASSOCIATION FOR
THE STUDY OF LIVER DISEASES

